

Property Listing  
Number

8580

### Hubbell's Real Estate

157 Main Street  
Cooperstown, NY13326

[www.hubbellsrealestate.com](http://www.hubbellsrealestate.com)

*JoAnn G. Hubbell, Broker*

(607) 547-5740 / Business

(607) 547-6000 / FAX



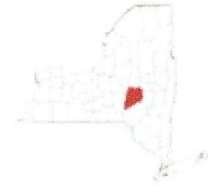
<b>Location</b>	Keys Road	<b>Townshi</b>	Otsego	<b>Acres</b>	25.7	<b>Price</b>	\$150,000
<b>Village/Area</b>	Pierstown	<b>School District</b>	Cooperstown				
<b>Assessed Value</b>	\$98,000.00	<b>Deed Ref</b>	L 985 p 129	<b>Price per Acre</b>			
				\$5,836.58			
<b>Total Taxes</b>	\$1,430.00	<b>Tax Map #</b>	54.00-2-12.05				
<b>Water</b>	no	<b>Sewer</b>	no				
<b>Other Buildings</b>	no						

**Easement** Good covenants and restrictions are in place.

**Remarks** Quality neighborhood, Nice homes, borders land under conservation easements. 1880' of road frontage. Mostly wooded, great building sites. 5 miles from office.

# Otsego County, New York

Geographic Information System (GIS)



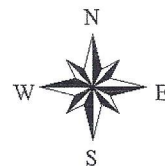
Date Printed: 4/23/2021

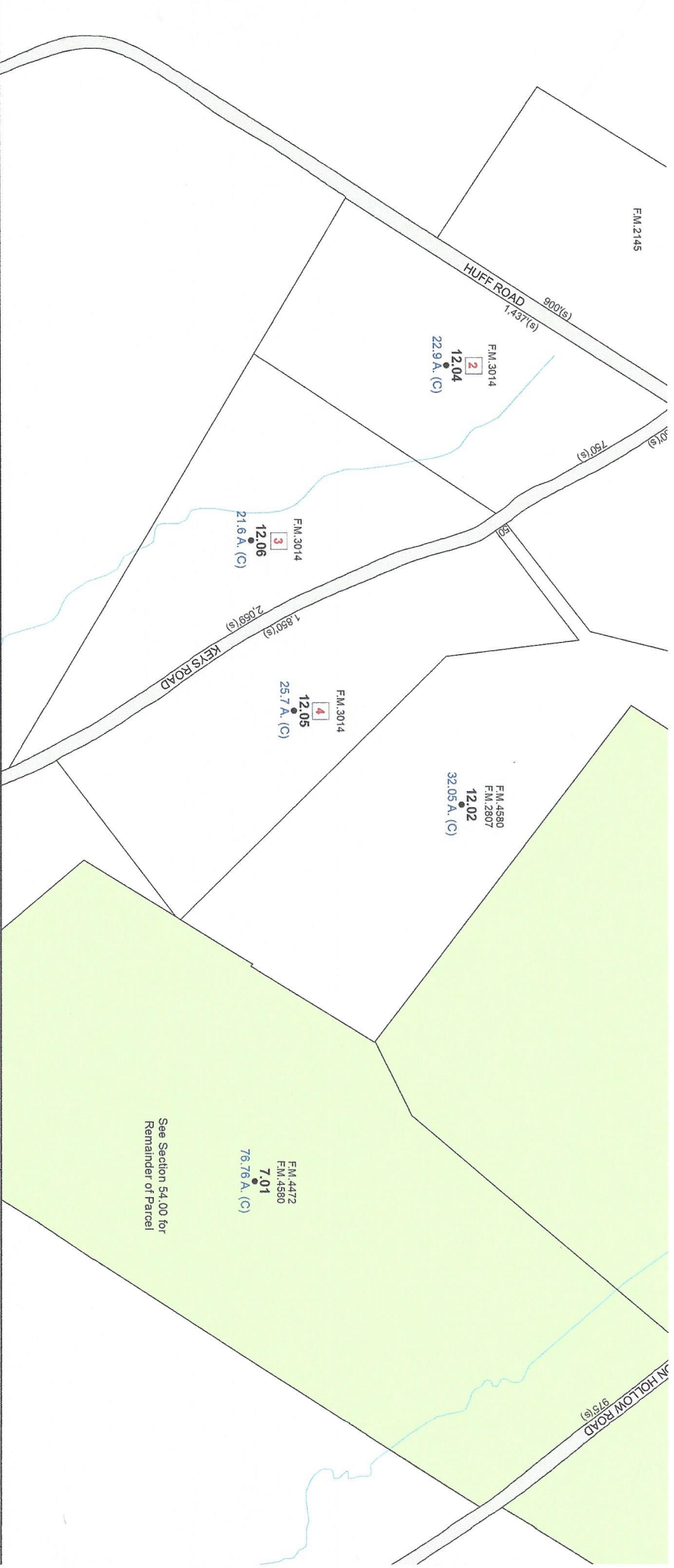


### MAP DISCLAIMER - NOTICE OF LIABILITY

This map is for assessment purposes only. It is not for legal description or conveyances. All information is subject to verification by any user. Otsego County, NY and its mapping contractors assume no legal responsibility for the information contained herein.

Approximate Scale: 1 inch = 400 feet





<p>photogrammetry by  <b>L. ROBERT KIMBALL</b>          EBENSBURG, PA.          prepared by  <b>NEW ENGLAND</b>  <b>GEOSYSTEMS</b>          MIDDLETOWN, CT</p>	<p><b>LEGEND:</b>          COUNTY LINE          TOWN LINE          CITY OR INC. VILLAGE LINES          PROPERTY LINE          BLOCK LIMIT LINE</p>	<p><b>TAX MAP BLOCK NO.</b>  <b>TAX MAP LOT NO.</b>          WATER          ROAD OR RAILROAD R/W          COMMON OWNERSHIP          COORDINATE - LOCATOR E 228,036 - N864,530</p>	<p><b>GREAT LOT NO.</b>  <b>SUBDIVISION LOT NO.</b>          DIMENSION (FROM DEED)          DIMENSION (SCALED)          DIMENSION (MEASURED)          AREA (FROM DEED)</p>
		<p>① 35</p>	<p>28          48.6'          45.7' (S)          81.4' (m)          2.36 A.</p>

POSES ONLY

GRID SYSTEM BASED ON THE NEW YORK STATE PL